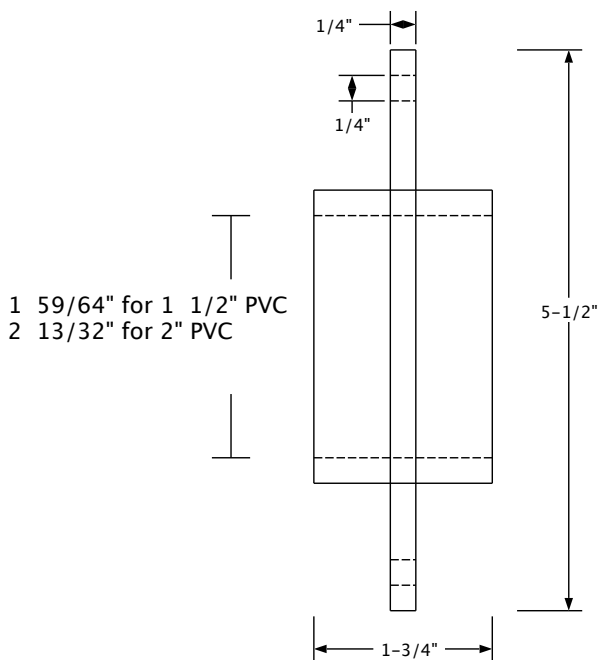
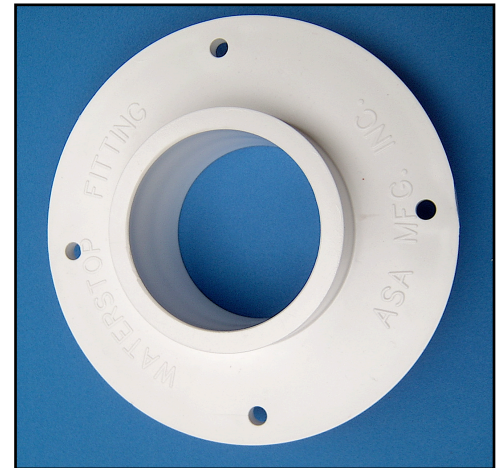




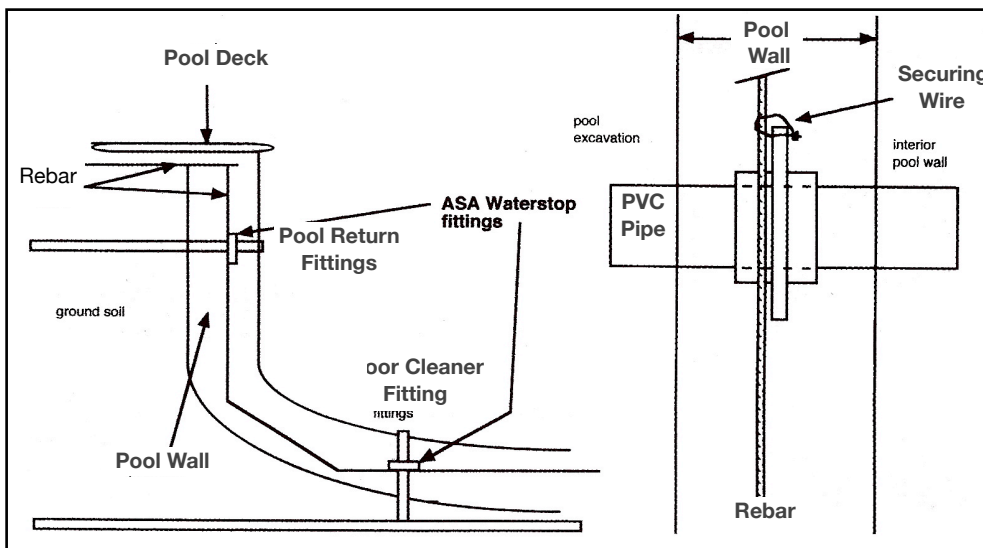
## WATERSTOP FITTINGS - SLEEVE DESIGN

- Cost effective solution eliminates weeping around pipe penetrations
- Fraction of the cost of brass waterstop fittings
- Non-metallic -- no grounding
- Available in 1 1/2" & 2"
- Hydrodynamic waterstop when encased in concrete
- More reliable than heat welded PVC
- Simply prime and glue in place
- Wire floor fittings tight and level during floor pour

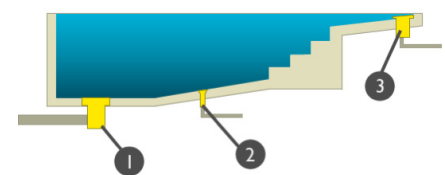


### Waterstop - Sleeve Design

Part #'s	Description
1 1/2"	
PVC-40-301	PVC Waterstop Sleeve Fitting
2"	
PVC-40-302	PVC Waterstop Sleeve Fitting



### Typical Pool Installation



- 1 Main Drain w/ ASA Sump
- 2 Floor Inlet w/ ASA Waterstop
- 3 ASA Zero Entry Gutter System

