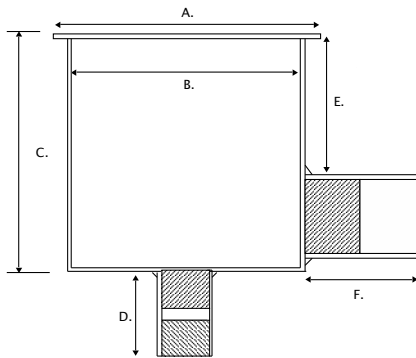
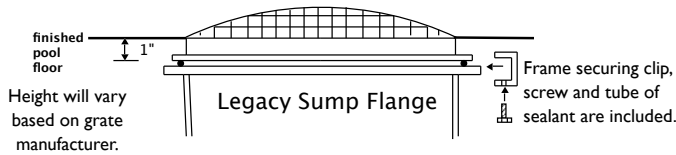


HEAVY DUTY FIBERGLASS SUMPS

- Fast installation
- Rough sand exterior finish
- Durable smooth gelcoat interior
- No forming! No pouring!
- Premium fiberglass & resin for maximum structural strength
- Non-metallic -- No grounding**
- 2" f.p.t. x f.p.t. fitting for hydro relief valve and pebble pipe
- "Quick Mount" hardware and sealant included
- Custom configurations fabricated -- Call us today!
- Optional waterstop flange

14879 SW 111th St.
Dunnellon, FL 34432
352-465-0236
352-465-0239 FAX



The ASME A112.19.8a-2008 Standard recommends the "E" dimension to be 1.5 times the diameter of the sump's outlet from the bottom of the grate to the top of the outlet.



Legacy Flange Design



Frame & Grates Sold Separately

Fiberglass LEGACY SUMP Dimensions

Sump Sizes & Part #'s	Dimensions (in inches) *						Outlet Size f.p.t. x soc	Compatible Grates **	NOTES
	A	B	C	D	E	F			
9" x 9"									
FPK-50-809	10.5	8.5	12	4.5	6.5	3	3"	List A	I
12" x 12"									
FPK-50-812-4	14	12.5	12	4.5	6.5	3.5	4"	List B	I
FPK-50-812-18-6	14	12	18	4.5	10	5.5	6"	List B	I
18" x 18"									
FPK-50-818-6	20.5	18	20	4.5	10	5.5	6"	List C	I
FPK-50-818-24-8	20.5	18	24	4.5	13.5	6.5	8"	List C	I
24" x 24"									
FPK-50-824-10	27	24	30	4.5	17	11.5	10" * soc x soc	List D	I, 2

NOTES:
* See Sump Drawing above for A,B,C,D,E,F measurements
** See Compatible Grate list below
1. ASME A112.19.8a-2008 dimensionally compliant (as an alternative to a field built sump / 2.3.4 Fig 2)
2. Sumps with 10" outlets are soc x soc

VGB Compatible Grates *

Grate Sizes Part #'s	Open Area List (sq in.)**	Flow Rate** @ 1.5 ft/sec	NOTES
9" x 9" A			
CMP 25508-090	38.9	120 gpm	
640-479XV	39.9	186 gpm	
MLD-FGD-0909	42.1	248 gpm	
914101	84	394 gpm	I
12" x 12" B			
WG1032HF	41.07	232 gpm	
640-4720	62.4	292 gpm	
CMP 25508-120	70.8	330 gpm	
MLD-FGD-1212	81.3	340 gpm	
1216101	101	474 gpm	2
18" x 18" C			
WG1033HF	92.7	434 gpm	
SUN18HPH101	104.4	490 gpm	
CMP 25508-180	155.6	610 gpm	
640-4770V	159.6	744 gpm	
MLD-FGD-1818	183	712 gpm	
24" x 24" D			
640-4760V	249.6	1168 gpm	
WAV24101	340	1444 gpm	3
FLAT24101	352	1531 gpm	3

NOTES:
* Compatible at time of publication and subject to change
** as per manufacturer's printed specifications at time of publication
1. Grate size is 14"x14" / 9"x 9"
2. Grate size is 16"x16" / 12"x12"
3. Stainless Steel Frame may require grounding