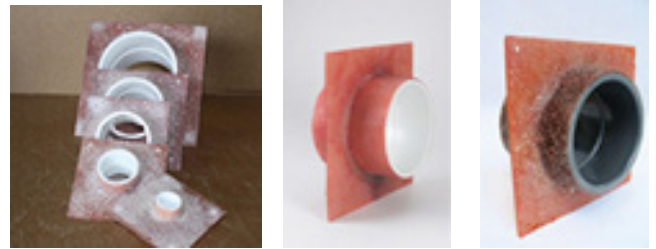


FIBERGLASS WATERSTOP COUPLINGS

- ◆ Rough exterior sand finish
- ◆ Fraction of the cost of brass fittings
- ◆ Non-metallic - no grounding required
- ◆ Fiberglass reinforced PVC fitting
- ◆ Stops weeping at pipe penetrations in equipment rooms, walls & floors, framed main drains, gutter manifolds, & surge tanks
- ◆ More reliable than heat welded PVC
- ◆ Larger sizes available in both SCH 40 and SCH 80



SCHEDULE 40 WATERSTOPS		PVC LENGTH	FLANGE LENGTH
Size (inches)	ASA Part #	A	B <small>+/- 0.5"</small>
1"	FPK-88-301	2 3/8"	6"
1.5"	FPK-88-301.5	2 5/8"	6"
2"	FPK-88-302	2 7/8"	6"
3"	FPK-88-303	4 1/8"	6 1/2"
4"	FPK-88-304	4 1/4"	8"
6"	FPK-88-306	6 1/4"	11 1/2"
8"	FPK-88-308	8 3/8"	15 3/4"
10"	FPK-88-310	12 1/2"	19 3/4"
12"	FPK-88-312	14 1/2"	23 1/2"
14"	FPK-88-314	16"	27 3/4"
16"	FPK-88-316	18 1/2"	31 3/4"
18"	FPK-88-318	21 5/8"	35 3/4"

SCHEDULE 80 WATERSTOPS		PVC LENGTH	FLANGE LENGTH
Size (inches)	ASA Part #	A	B <small>+/- 0.5"</small>
1"	FPK-89-301	2 3/8"	6"
1.5"	FPK-89-301.5	2 7/8"	6"
2"	FPK-89-302	3 1/8"	6"
3"	FPK-89-303	4"	6 1/2"
4"	FPK-89-304	4 3/4"	8 3/4"
6"	FPK-89-306	6 1/4"	11 3/4"
8"	FPK-89-308	8 1/4"	15 3/4"
10"	FPK-89-310	12 1/2"	19 3/4"
12"	FPK-89-312	14 3/4"	23 3/4"
14"	FPK-89-314	16 1/4"	27 3/4"
16"	FPK-89-316	18 1/4"	31 3/4"
18"	FPK-89-318	20 1/4"	35 3/4"

